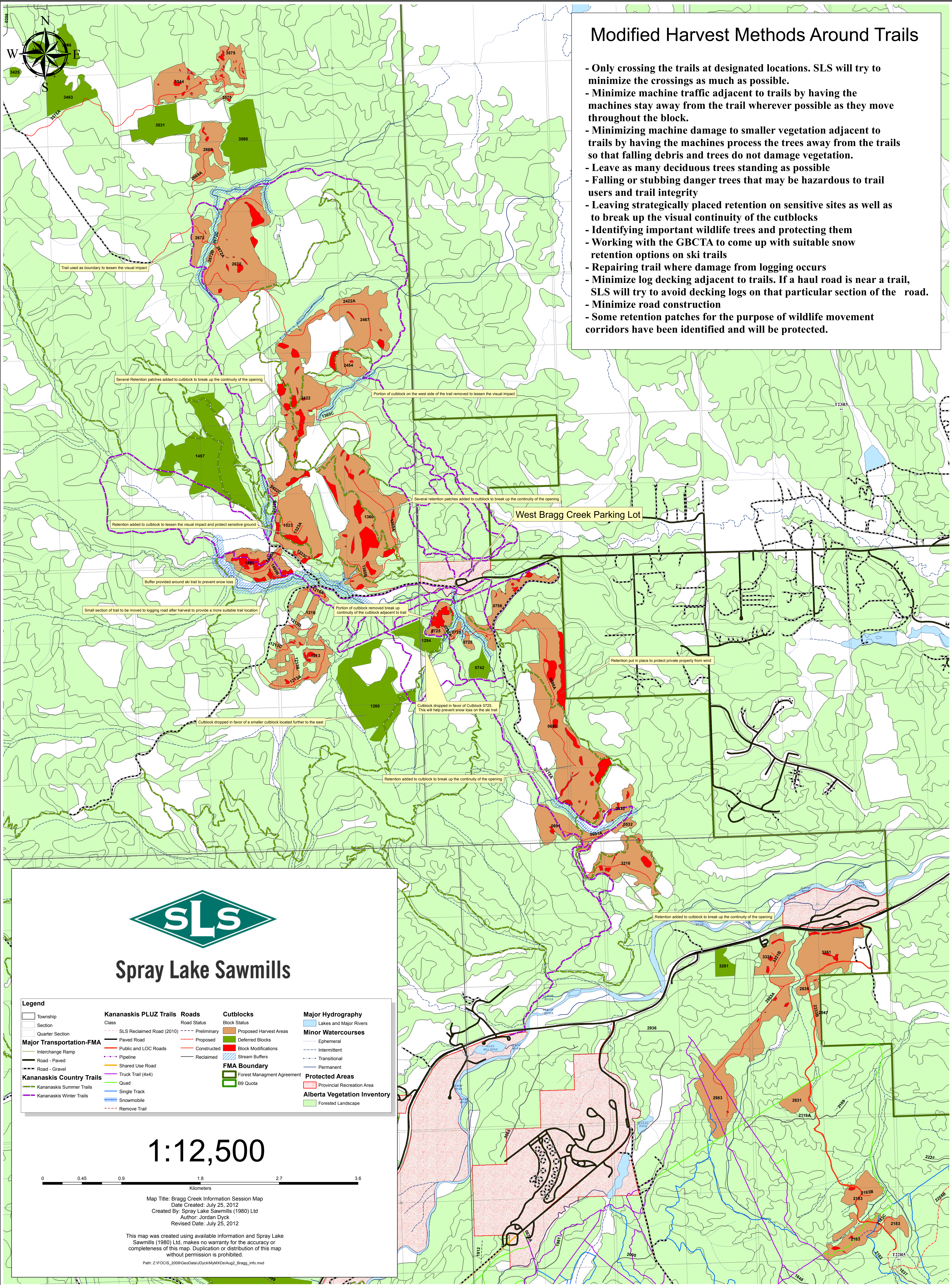


# Modified Harvest Methods Around Trails

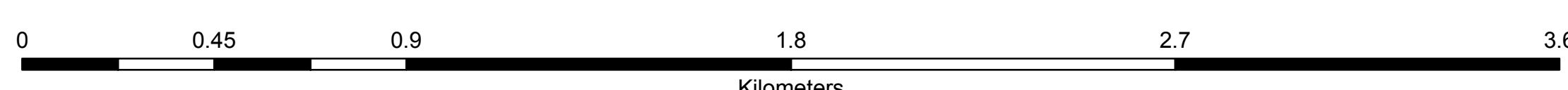
- Only crossing the trails at designated locations. SLS will try to minimize the crossings as much as possible.
- Minimize machine traffic adjacent to trails by having the machines stay away from the trail wherever possible as they move throughout the block.
- Minimizing machine damage to smaller vegetation adjacent to trails by having the machines process the trees away from the trails so that falling debris and trees do not damage vegetation.
- Leave as many deciduous trees standing as possible
- Falling or stubbing danger trees that may be hazardous to trail users and trail integrity
- Leaving strategically placed retention on sensitive sites as well as to break up the visual continuity of the cutblocks
- Identifying important wildlife trees and protecting them
- Working with the GBCTA to come up with suitable snow retention options on ski trails
- Repairing trail where damage from logging occurs
- Minimize log decking adjacent to trails. If a haul road is near a trail, SLS will try to avoid decking logs on that particular section of the road.
- Minimize road construction
- Some retention patches for the purpose of wildlife movement corridors have been identified and will be protected.



**Spray Lake Sawmills**

Legend	
	Township
	Section
	Quarter Section
<b>Major Transportation-FMA</b>	
	Interchange Ramp
	Road - Paved
	Road - Gravel
<b>Kananaskis Country Trails</b>	
	Kananaskis Summer Trails
	Kananaskis Winter Trails
	Remove Trail
<b>Kananaskis PLUZ Trails</b>	
	SLS Reclaimed Road (2010)
	Proposed
	Public and LOC Roads
	Pipeline
	Shared Use Road
	Truck Trail (4x4)
	Quad
	Single Track
	Snowmobile
	Remove Trail
<b>Roads</b>	
	Preliminary
	Proposed
	Constructed
	Reclaimed
<b>Cutblocks</b>	
	Proposed Harvest Areas
	Deferred Blocks
	Block Modifications
	Stream Buffers
<b>FMA Boundary</b>	
	Forest Management Agreement
	B9 Quota
<b>Major Hydrography</b>	
	Lakes and Major Rivers
<b>Minor Watercourses</b>	
	Ephemeral
	Intermittent
	Transitional
	Permanent
<b>Protected Areas</b>	
	Provincial Recreation Area
	Forested Landscape

**1:12,500**



Map Title: Bragg Creek Information Session Map  
 Date Created: July 25, 2012  
 Created By: Spray Lake Sawmills (1980) Ltd  
 Author: Jordan Dyck  
 Revised Date: July 25, 2012

This map was created using available information and Spray Lake Sawmills (1980) Ltd, makes no warranty for the accuracy or completeness of this map. Duplication or distribution of this map without permission is prohibited.

Path: Z:\FOCIS\_2009\GeoData\Jdyck\MyMXD\Aug2\_Bragg\_Info.mxd